

# edgcam

# edgcam

The Standard in Intelligent Manufacturing

Edgecam is a market leading computer aided manufacturing (CAM) system for NC part programming. With unparalleled ease of use and sophisticated toolpath generation, it's the only CAM system you'll need for milling, turning, mill-turn machining and Wire EDM.

Edgecam utilizes your company's knowledge and experience to drive the CAM process with automation tools to suit different applications - allowing you to maintain your competitive edge.

## The Edgecam advantage:

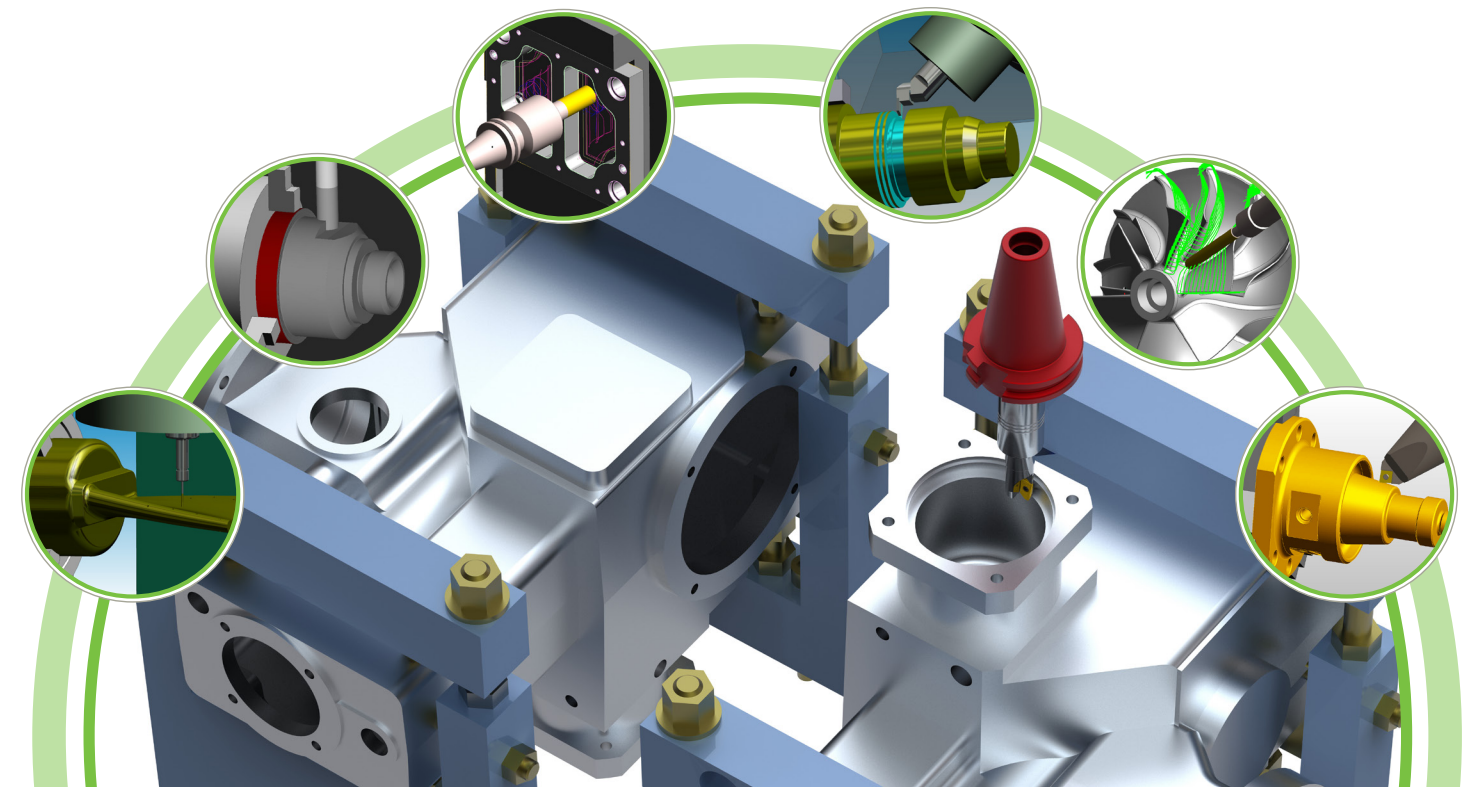
- Edit Free G and M code
- Works with Native data
- Full Machine Simulation

### Vero Software Litimited (Hanoi Office)

1st floor, Hoang Ngoc building,  
Lot C2C, lane 72  
Tran Thai Tong street, Cau Giay district,  
Hanoi, Vietnam

**tel.** +84 (0) 4 3212 3814  
**fax.** +84 (0) 4 3253 5255  
**email.** infokr@verosoftware.com  
**web.** www.verosoftware.com

**vero**  
Software



The only CAM system you'll need for:

Milling

Turning

Multi-Axis  
Mill / Turn

Wire EDM

# The Standard in Intelligent Manufacturing

## Workflow



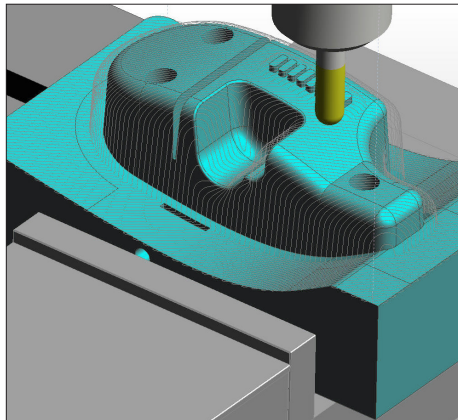
Edgecam Workflow is designed specifically to reduce manufacturing costs, improve quality and achieve shorter lead times. Workflow understands both the component topology and varied manufacturing environments.

### Workflow Product Highlights:

- 3 level of manufacturing intelligence. (Fully Automatic, Semi-Automatic, Full Control).
- Faster Learning Curve.
- Quicker Implementation.

David Ferguson, Owner

## Milling 2 ½ - 5 axis



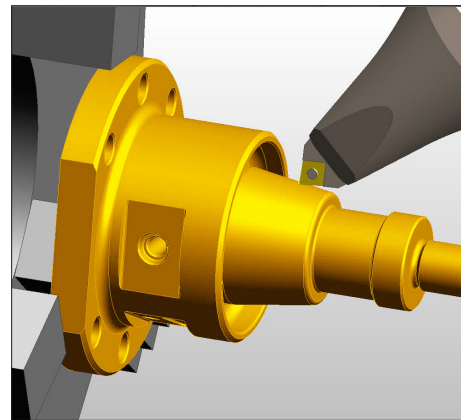
Edgecam Milling provides functionality to program wire frame geometry or solid model component parts on a variety of machine tool configurations, from 2.5 axis milling to complex surface tool paths on 3 to 5 axis milling machines.

### Milling Product Highlights:

- Wide range of advanced options providing complete control of the tool.
- In process stock, reducing air cutting.
- Full collision checking.
- Full machine tool and toolpath simulation.
- Intuitive, easy-to-use graphical user interface.

Shawn Grawunde, Owner

## Turning



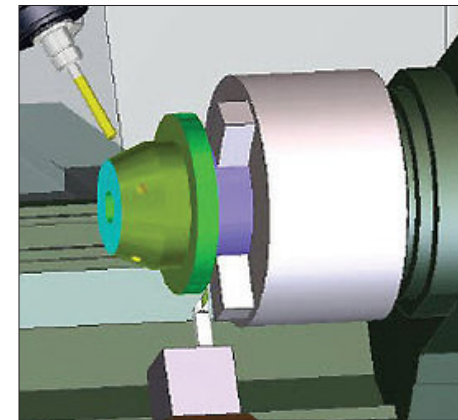
Edgecam Turning provides functionality for a wide range of machine tools, including 2-axis lathes, multi-turret configurations, sub-spindle turning centers and mill/turn machines.

### Turning Product Highlights:

- Increase machine tool utilization.
- Reduced programming time.
- Reduce component cycle time.
- Eliminate programming errors and reduce potential scrap.
- Reduce machine tool prove out by graphically simulating the tool path.

Simon Jones, Managing Director

## Multi-Tasking Machines



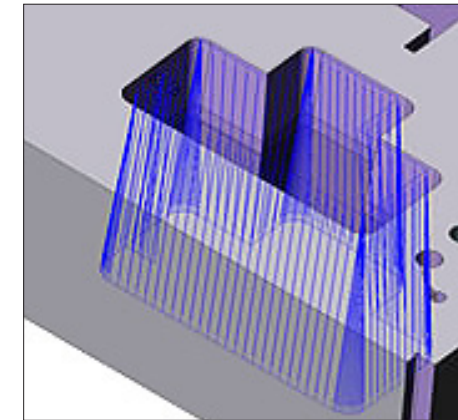
Edgecam's turning and milling combination in a single environment creates a simple and safe programming experience, providing a solid foundation for fast and efficient programs.

### Multi-Tasking Product Highlights:

- One single machining environment.
- Full machine tool and toolpath simulation.
- Full collision checking on component parts.
- Support for Twin Spindle, up to Four Turrets, Pickoff.
- Spindle, C, Y & B axis machining.

Ian Mence, Business Development Manager

## Wire EDM



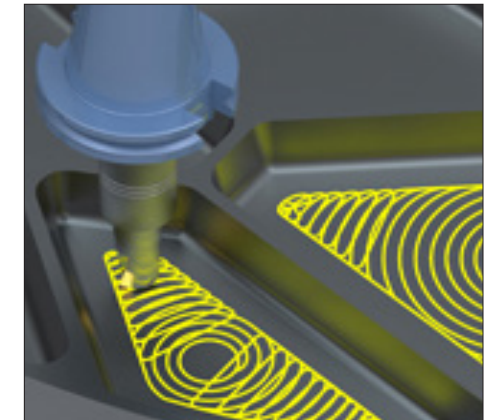
Edgecam Wire EDM provides the flexibility and confidence to manufacture 2 and 4 axis parts accurately and efficiently; providing the ability to easily program complex shapes with irregular tapers.

### Wire EDM Product Highlights:

- Comprehensive machine and postprocessor database.
- Feature recognition with projection to cutting planes.
- Knowledge-based cutting strategies.
- Roughing and finishing cuts easily applied to multiple punches and dies.

Mike Lewis, Sales Director.

## Waveform



Edgecam Waveform roughing strategy is a high speed machining technique that maintains a constant tool cutting load by ensuring the tool engagement into the material is consistent.

### Waveform Product Highlights:

- Reduced cycle time.
- Improved tool life.
- Lengthens machine maintenance cycles.
- Keeps constant chip load.
- Cuts deeper and faster.

Aaron Horwood - Programmer

"While machining with Edgecam is fast, I'm not as concerned with the time involved as I am with the part being correct. With Edgecam, the parts are correct."

"The parts I make are all to spec, and everything is identical to the eye. From my perspective, they're perfect."

"Without Edgecam we certainly couldn't have moved into some of the markets we're now in, such as defense and specialist automotive. Edgecam gives us the ability to produce high precision, highly complex parts, that we just couldn't have attempted before."

"There's no point in having software that will only program one type of machine. It has to be able to handle machines from all manufacturers, which Edgecam takes in its stride."

"We're taking on ever-more challenging jobs, but they rarely pose a problem to our engineering team. I look at these medical components and wonder how on Earth would we make these without Edgecam?"

"Programming time has been sliced by 90% with Edgecam. The gains are huge, enormous."